

# ASHLEY BOROUGH

David J. Evans, Mayor

Donald Sipple, Council Chair  
Frank Sorokach, Council Vice Chair  
Joseph Gorham

Sharon Keefe  
Gerald Maldonado  
Joseph McGlynn, Jr.

AshleyPa.net

---

Greg Gulick, Borough Manager

William E. Vinsko, Jr., Esquire, Solicitor

## BOROUGH COUNCIL MEETING AGENDA

**NOVEMBER 10, 2015 -- 6:30 PM**

- (a) Call to Order
- (b) Roll Call of Council Members and Mayor
- (c) Pledge of Allegiance

**NOTE: An Executive Session was held on October 28, 2015 regarding Real Estate Leasing. An Executive Session was also held on Friday, November 6, 2015 to discuss personnel issues related to the 2016 Budget.**

- (d) Council Member Presentations
- (e) Mayor's Presentation
- (f) Borough Manager's Presentation
- (g) Solicitor's Presentation
- (h) Chief Fedorczyk's Presentation
- (i) Ashley Business Association/Crime Watch Report
- (j) *Resolutions and Ordinances*

• **Public Comment on any pending legislation only.**

**RESOLUTION NUMBER 78 OF 2015** – A Resolution approving the bills for October, 2015 in the amount of \$38,010.24.

**RESOLUTION NUMBER 79 OF 2015** – A Resolution approving the payroll for October, 2015 in the amount of \$44,958.57.

**RESOLUTION NUMBER 80 OF 2015** – A Resolution authorizing the Borough to accept real property from the Luzerne County Redevelopment Authority as more fully outlined on the Map attached as Exhibit “A” to this Agenda.

**RESOLUTION NUMBER 81 OF 2015** – A Resolution approving the 2016 Budget (*FIRST READING*).

(k) **PUBLIC COMMENT**

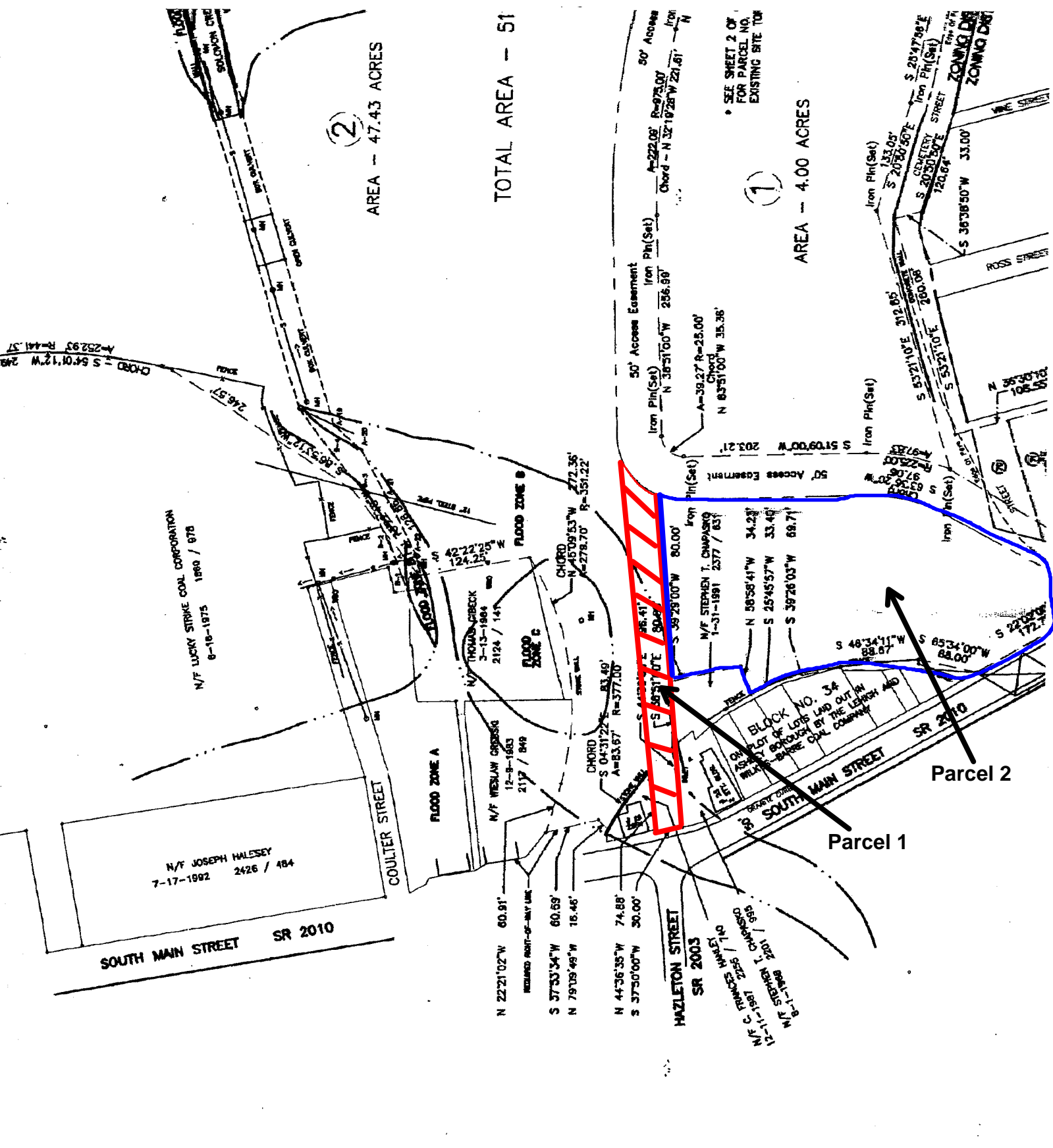
(l) Future Meeting Dates:

**TUESDAY, DECEMBER 1, 2015**  
BOROUGH COUNCIL SPECIAL SESSION

**TUESDAY, DECEMBER 8, 2015**  
BOROUGH COUNCIL MEETING

Be sure to check out the **NEW** Ashley Borough ONLINE Municipal Office at **AshleyPa.net**

(m) Adjournment



②  
 AREA - 47.43 ACRES

TOTAL AREA - 51

①  
 AREA - 4.00 ACRES

SEE SHEET 2 OF  
 FOR PARCEL NO.  
 EXISTING SITE TOP

SOUTH MAIN STREET SR 2010

N/F JOSEPH HALSEY  
 7-17-1992 2426 / 484

N/F LUCKY STRIKE COAL CORPORATION  
 6-18-1975 1860 / 878

FLOOD ZONE A

FLOOD ZONE B

FLOOD ZONE C

BLOCK NO. 34  
 LOT 1  
 BOROUGHS BY THE LEASE AND  
 RELEASE TO SHARON COAL COMPANY

Parcel 1

Parcel 2

HAZLETON STREET  
 SR 2003

SOUTH MAIN STREET  
 SR 2010

ZONING DISTRICT

ROSS STREET

STREET

STREET

STREET

STREET

STREET

STREET

STREET

STREET

STREET

STREET

STREET

STREET

STREET

STREET

STREET

STREET

STREET

STREET

STREET

STREET

STREET

STREET

STREET

STREET

STREET

STREET

STREET

STREET

STREET

STREET

STREET

STREET

STREET

STREET

STREET

STREET

STREET

STREET

STREET

STREET

STREET

STREET

STREET

STREET

STREET

STREET

STREET

STREET

STREET

STREET

STREET

STREET

STREET

STREET

STREET

STREET

STREET

STREET

STREET

STREET

STREET

STREET

STREET

STREET

STREET

STREET

STREET

STREET

STREET

STREET

STREET

STREET

STREET

STREET

STREET

STREET

STREET

STREET

STREET

STREET

STREET

STREET

STREET

STREET

STREET

STREET

STREET

STREET

STREET

STREET

STREET

STREET

STREET

STREET

STREET

STREET

STREET

STREET

STREET

STREET

STREET

STREET

STREET

STREET

STREET

STREET

STREET

STREET

STREET

STREET

STREET

STREET

STREET

STREET

STREET

STREET

STREET

STREET

STREET

STREET

STREET

STREET

STREET

STREET

STREET

STREET

STREET

STREET

STREET

STREET

STREET

STREET

STREET

STREET

STREET

STREET

STREET

STREET

STREET

STREET

STREET

STREET

STREET

STREET

STREET

STREET

STREET

STREET

STREET

STREET

STREET

STREET

STREET

STREET

STREET

STREET

STREET

STREET

STREET

STREET

STREET